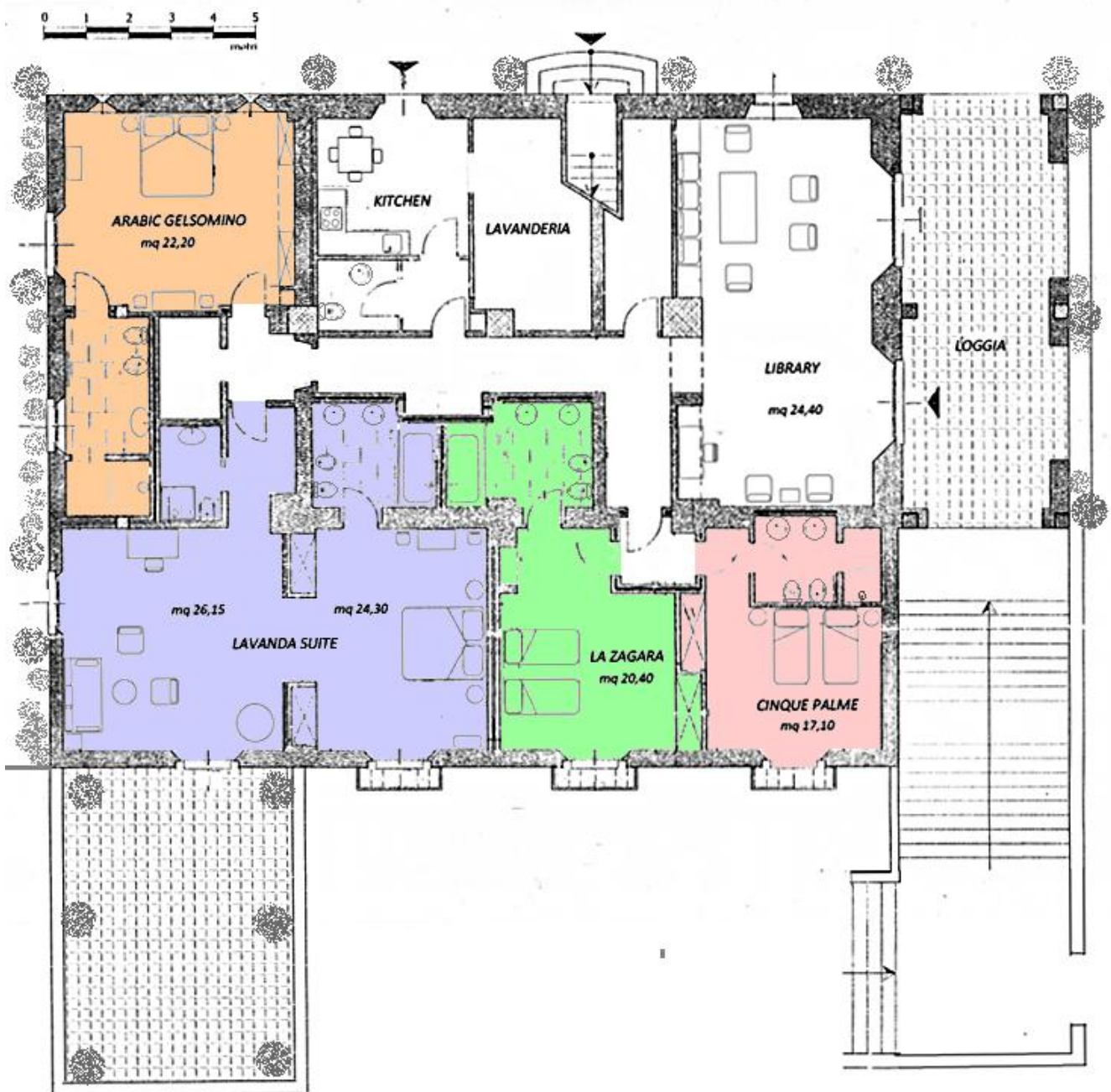


The Villa

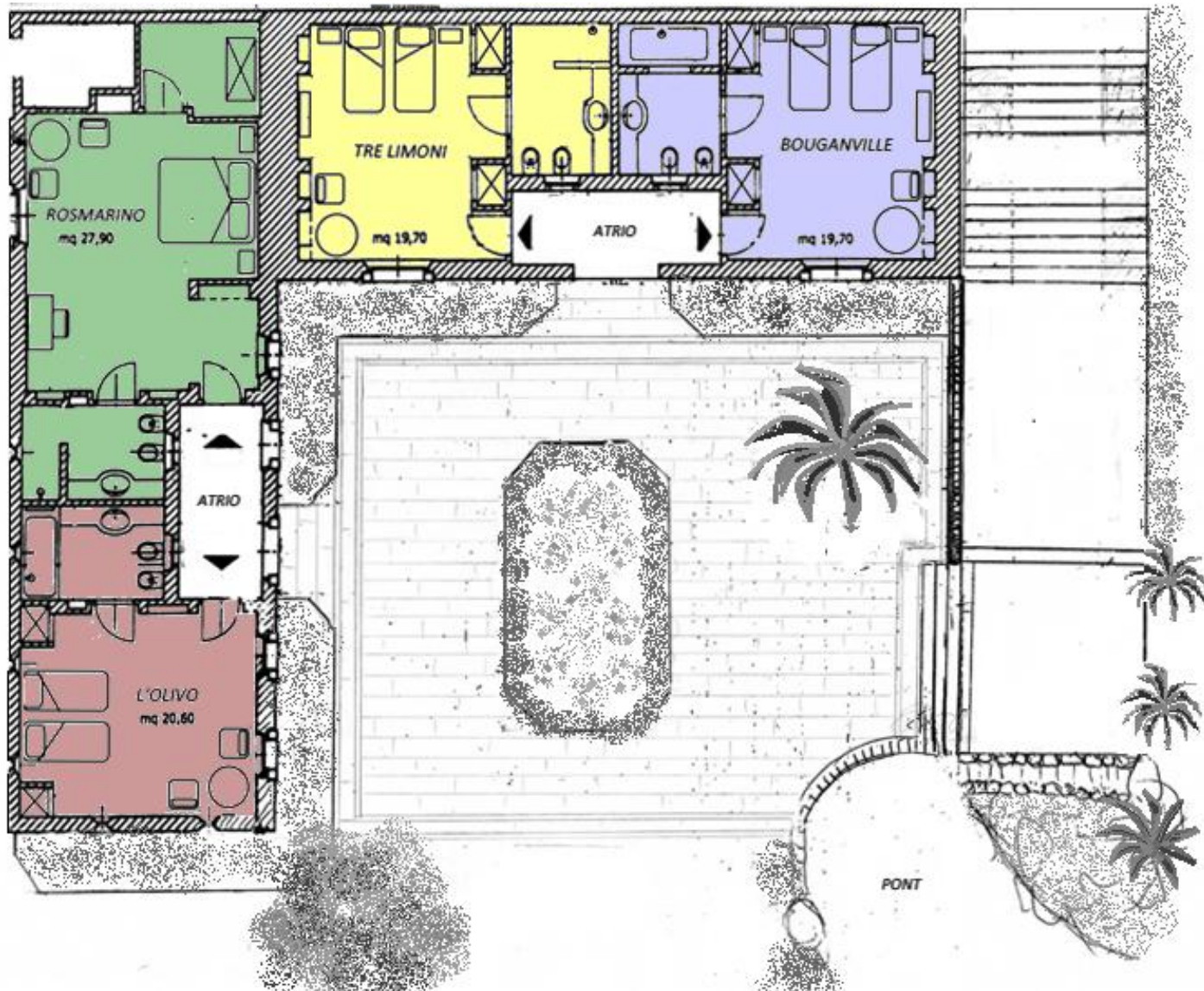
Upper garden floor - Piano Nobile

- 2 x twin bedrooms (one with ensuite shower/one with ensuite bathtub) interconnecting door (can be made doubles)
- 1 x double bedroom with shower
- 1 x suite with separate living room (with queen sized bed) large private terrace and two bathrooms (one shower/one bathtub)
- 2 cot beds, 2 additional beds and 2 high chairs can be made available on request – please let us know in advance where you would like the cot beds to be set up.
- Kitchenette with fridge/washing machine/gas oven/eating table for 4-5 p.
- Large sitting room with and SATTELITE TV/DVD/VHS/ CD.
- Extensive literature on Sicily and local attractions



Lower garden floor – Courtyard Floor

- 1 x double bedroom, 1 x twin (one with ensuite shower/one with ensuite bathtub) private entrance off courtyard.
- 2 x twin (one with ensuite shower/one with ensuite bathtub) private entrance off courtyard. (can be made into double bed if required)



Orangerie

in the swimmingpool area

- Large sitting room with bar and drinks, fridge, SKY TV/DVD/CD, MP 3 docking station, board games
- Dining room with table sitting up to 20 guests.
- 2 toilets /changing rooms
- Large professional kitchen with gas stove /2 ovens/ dishwasher/ ice maker/coffee maker/juice squeezer/
- The “Belvedere” in the first floor is a multifunctional room and can be used for Joga- or Painting lessons, meditatin room, play room,ecc or just to relax.

